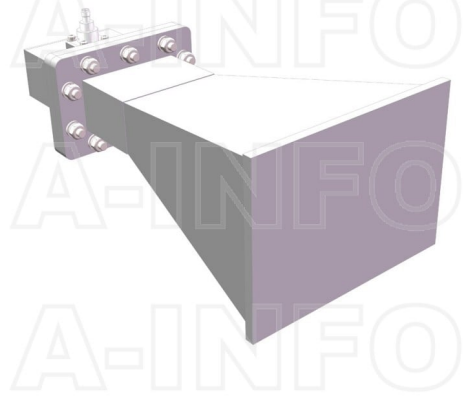


LB-284-10-C-SFSP0 Standard Gain Horn Antenna 2.6-3.95GHz 10dB Gain  
SMA Female



Standard Gain Horn Antenna Operating From 2.6GHz to 3.95GHz With a  
Nominal 10dB Gain With SMA Female Connector

## Product Information

SKU	LB-284-10-C-SFSP0
-----	-------------------

## Description

Standard Gain Horn Antenna LB-284-10-C-SFSP0, operating from 2.6 to 3.95GHz with a nominal 10dB gain and low VSWR 1.25:1 with SMA Female connector output. The model LB-284-10-C-SFSP0 has uniform gain through its frequency span, providing efficient performance characteristics and directionality. It can handle 50W continuously and 3000W peak power. Constructed of lightweight corrosion-resistant aluminum, the horn comes with a specially designed weatherproof radome which provides excellent protection against the rain and dust but has very little loss across the full operating frequency band. This standard gain horn antenna is linearly polarized and ideally suited for EMI testing, direction finding, surveillance, antenna gain and pattern measurements and other applications.

## Technical Specification

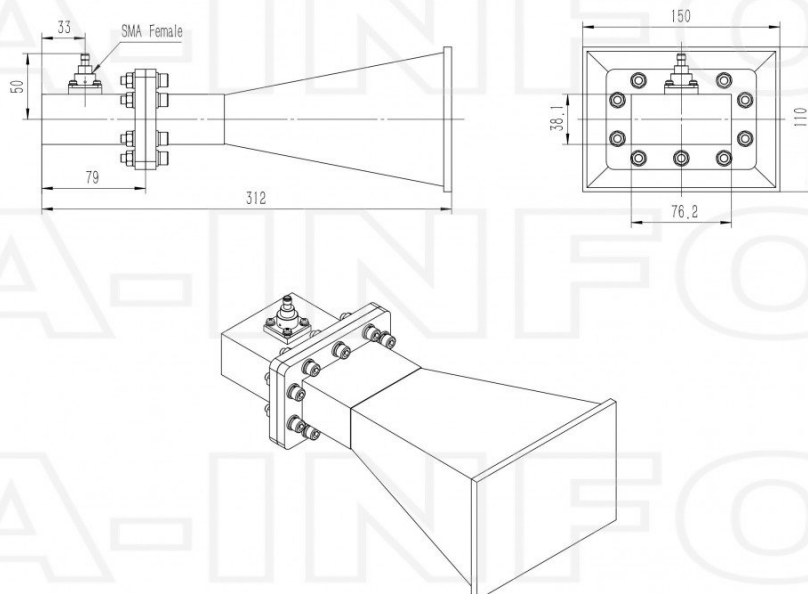
Electrical Specification		Interface	
Frequency, Min (GHz)	2.6	Output Type	Coaxial
Frequency, Max (GHz)	3.95	Connector	SMA
Waveguide Type	Rectangular	Connector Gender	Female
Waveguide Size EIA WR	WR284	Mechanical Specification	
Gain, Typ (dBi)	10	Figure	C Type
Polarization	Linear	Body Material	Al
3dB Beamwidth, E-Plane, Typ (Deg.)	51	Finish	Chemical Conversion Coating, Gray Paint
3dB Beamwidth, H-Plane, Typ (Deg.)	43	Size, W (mm)	150
Cross Pol. Isolation, Typ (dB)	30	Size, H (mm)	110
VSWR, Typ	1.25:1	Size, L (mm)	312
Impedance, (Ohm)	50	Weight, (kg)	1.02
Power Handling, CW, (W)	50		
Power Handling, Peak, (W)	3000		

### Additional Information

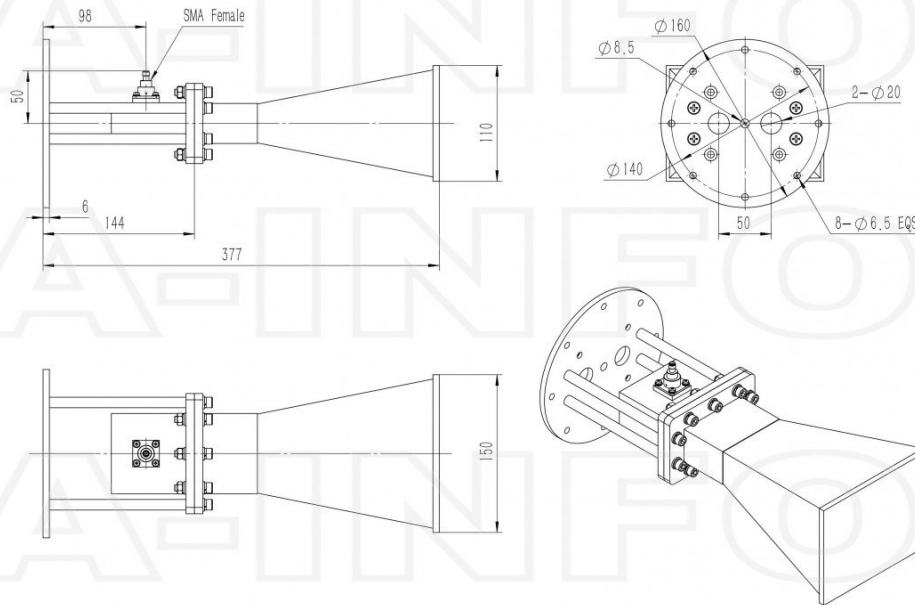
Application	Outdoor, Waterproof and Dustproof, Fixed	Solution for	Gain Reference Antenna Measurement Reflector Feed Far-field Measurement System Intergration Material Measurement
-------------	--	--------------	---

### Outline Drawing

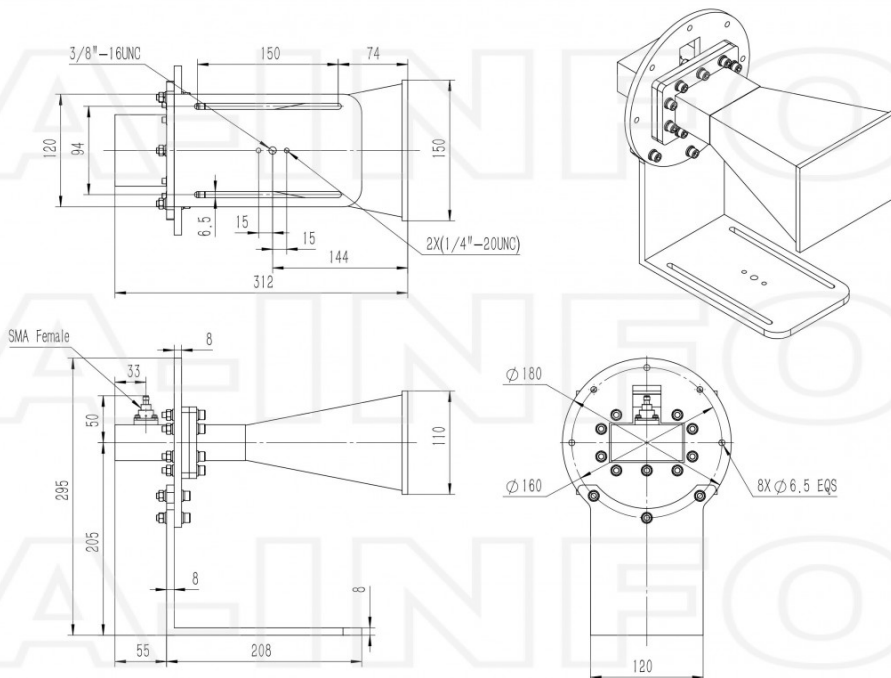
SMA Female Output with Radome (Option, P/N: LB-284-10-C-SFSPO, Outdoor Application)



SMA Female Output with Round Mounting Bracket & Radome (Option, P/N: LB-284-10-C-MB & LB-284-10-C-SFSPO, Outdoor Application)

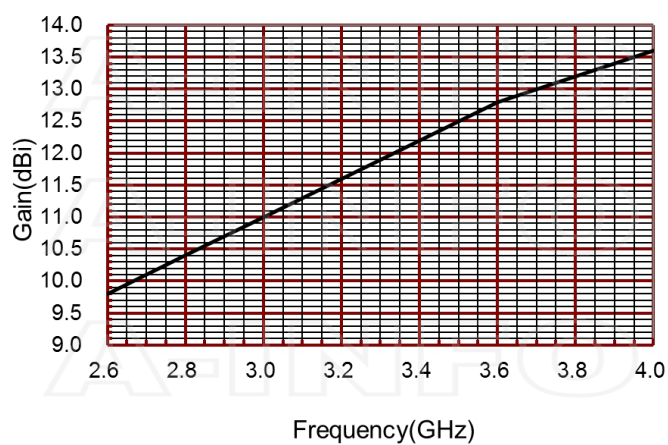


SMA Female Output with L Type Mounting Bracket & Radome (Option, P/N: LB-284-10-C-L & LB-284-10-C-SFSPO, Outdoor Application)

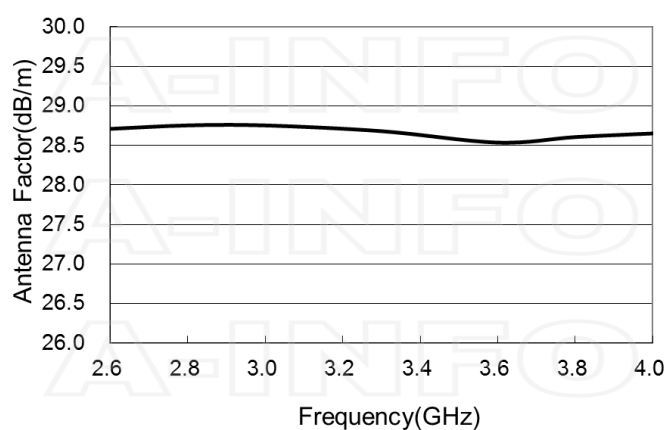


## Typical Test Results

### Gain



### Antenna Factor

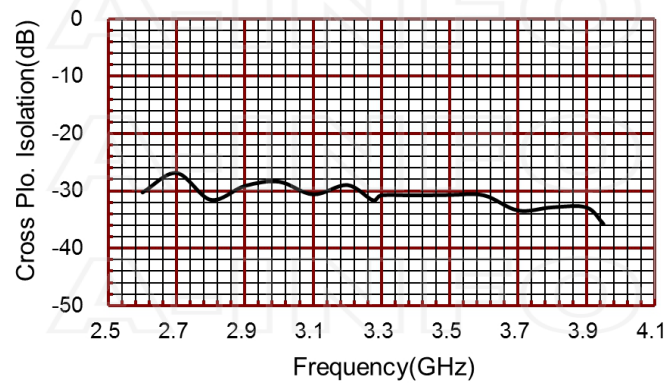


### Antenna Factor (Table)

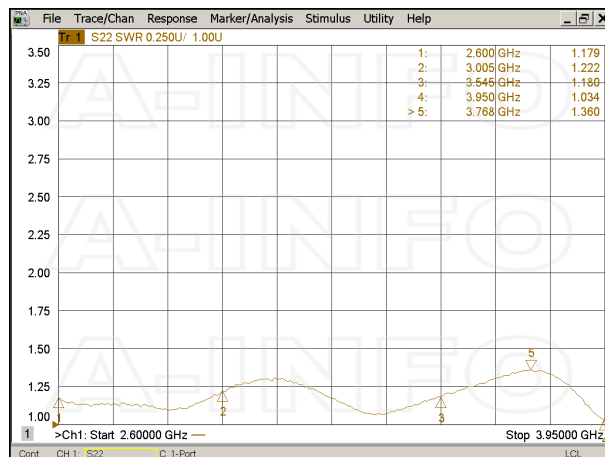
Frequency(GHz)	Gain(dBi)	Antenna Factor(dB/m)
2.6	9.8	28.71
2.8	10.4	28.75
3.0	11.0	28.75
3.3	11.9	28.68
3.6	12.8	28.54
3.8	13.2	28.61
4.0	13.6	28.65



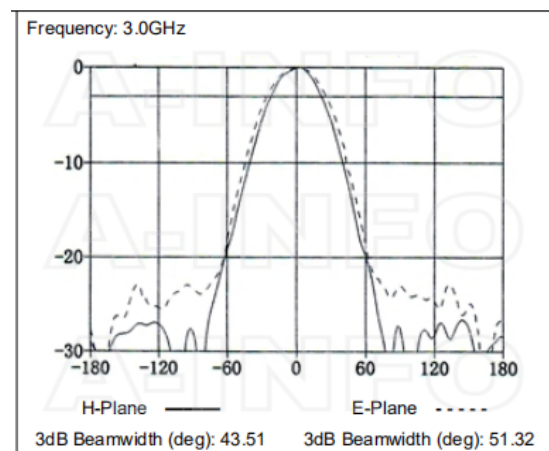
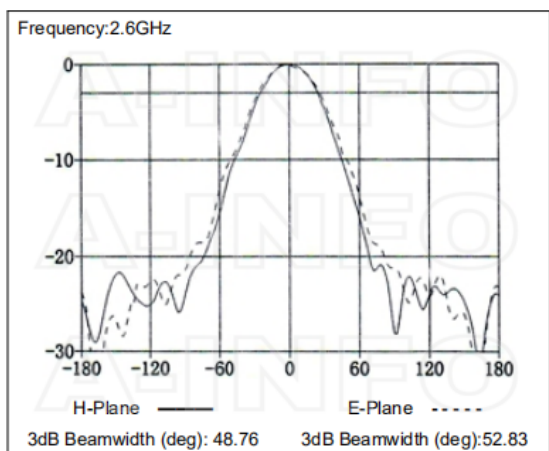
### Cross Polarization Isolation

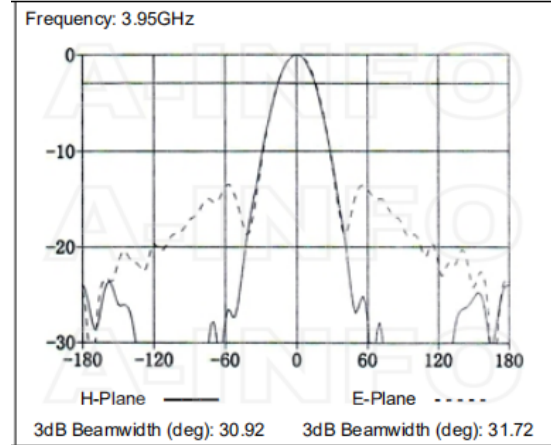
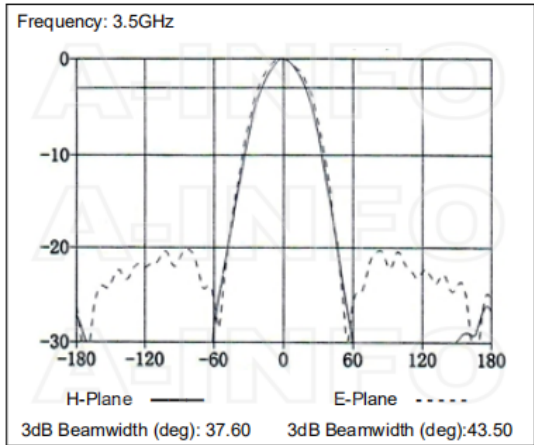


### VSWR



### Pattern





### Related Products



LB-284-10-C-MB Round Type Mounting Bracket



LB-284-10-C-L L type mounting bracket



LB-284-10-C-MA Stinger Type Mounting Bracket



Tripod\_50Kg Al Alloy Tripod



Carrying Case\_LB-284-10-C Al Alloy Carrying Case



M6x30 Hex\_Pack WR284-WR159 Flange Assembly Pack



SM-SM-A050-1000 Flexible Cable Assembly 1000mm DC- 26.5GHz SMA Male to SMA Male



SM-SM-A050-1500 Flexible Cable Assembly 1500mm DC- 26.5GHz SMA Male to SMA Male



SM-SM-A050-2000 Flexible Cable Assembly 2000mm DC- 26.5GHz SMA Male to SMA Male



SM-SM-A050-3000 Flexible Cable Assembly 3000mm DC- 26.5GHz SMA Male to SMA Male



SM-SM-A050-5000 Flexible Cable Assembly 5000mm DC- 26.5GHz SMA Male to SMA Male



SM-SM-A050-10000 Flexible Cable Assembly 10000mm DC- 26.5GHz SMA Male to SMA Male



SM-SM-A080-200 Flexible Cable  
Assembly 200mm DC- 26.5GHz  
SMA Male to SMA Male



SM-SM-A080-300 Flexible Cable  
Assembly 300mm DC- 26.5GHz  
SMA Male to SMA Male



SM-SM-A080-500 Flexible Cable  
Assembly 500mm DC- 26.5GHz  
SMA Male to SMA Male



SM-SM-A080-1000 Flexible Cable  
Assembly 1000mm DC- 26.5GHz  
SMA Male to SMA Male



SM-SM-A080-1500 Flexible Cable  
Assembly 1500mm DC- 26.5GHz  
SMA Male to SMA Male



SM-SM-A080-2000 Flexible Cable  
Assembly 2000mm DC- 26.5GHz  
SMA Male to SMA Male



SM-SM-A080-3000 Flexible Cable  
Assembly 3000mm DC- 26.5GHz  
SMA Male to SMA Male



SM-SM-A080-5000 Flexible Cable  
Assembly 5000mm DC- 26.5GHz  
SMA Male to SMA Male



SM-SM-A080-10000 Flexible  
Cable Assembly 10000mm DC-  
26.5GHz SMA Male to SMA Male



SM-SM-A080-20000 Flexible  
Cable Assembly 20000mm DC-  
26.5GHz SMA Male to SMA Male



SM-SM-A100-100 Flexible Cable  
Assembly 100mm DC- 18GHz  
SMA Male to SMA Male



SM-SM-A100-200 Flexible Cable  
Assembly 200mm DC- 18GHz  
SMA Male to SMA Male



SM-SM-A100-300 Flexible Cable  
Assembly 300mm DC- 18GHz  
SMA Male to SMA Male



SM-SM-A100-500 Flexible Cable  
Assembly 500mm DC- 18GHz  
SMA Male to SMA Male



SM-SM-A100-1000 Flexible Cable  
Assembly 1000mm DC- 18GHz  
SMA Male to SMA Male



SM-SM-A100-1500 Flexible Cable  
Assembly 1500mm DC- 18GHz  
SMA Male to SMA Male



SM-SM-A100-2000 Flexible Cable  
Assembly 2000mm DC- 18GHz  
SMA Male to SMA Male



SM-SM-A100-3000 Flexible Cable  
Assembly 3000mm DC- 18GHz  
SMA Male to SMA Male



SM-SM-A100-5000 Flexible Cable  
Assembly 5000mm DC- 18GHz  
SMA Male to SMA Male

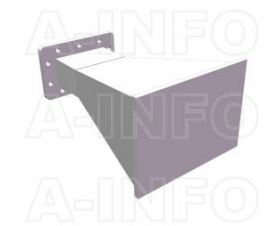


SM-SM-A100-10000 Flexible  
Cable Assembly 10000mm DC-  
18GHz SMA Male to SMA Male

### Similar Products



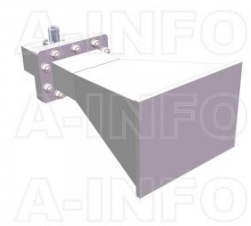
LB-284-10-A Standard Gain Horn  
Antenna 2.6-3.95GHz 10dB Gain  
Rectangular Waveguide Interface



LB-284-10-ASPO Standard Gain  
Horn Antenna 2.6-3.95GHz 10dB  
Gain Rectangular Waveguide  
Interface



LB-284-10-C-NF Standard Gain  
Horn Antenna 2.6-3.95GHz 10dB  
Gain N Type Female



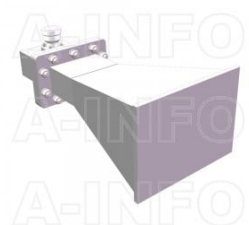
LB-284-10-C-NFSPPO Standard  
Gain Horn Antenna 2.6-3.95GHz  
10dB Gain N Type Female



LB-284-10-C-SF Standard Gain  
Horn Antenna 2.6-3.95GHz 10dB  
Gain SMA Female



LB-284-10-C-7/16F Standard  
Gain Horn Antenna 2.6-3.95GHz  
10dB Gain 7/16(DIN) Female



LB-284-10-C-7/16FSPO Standard  
Gain Horn Antenna 2.6-3.95GHz  
10dB Gain 7/16(DIN) Female

### About this Datasheet

#### • Product Information

Product Link:  
<https://www.ainfoinc.com/lb-284-10-c-sfspo-standard-gain-horn-antenna-2-6-3-95-ghz-10db-gain-sma-female>  
Data subject to change without notice.  
© A-INFO INC. 2023. All Rights Reserved

#### • Contact Us

Address:dd  
60 Tesla, Irvine, CA 92618,  
USA

Website:  
[www.ainfoinc.com](http://www.ainfoinc.com)

Email:  
[sales@ainfoinc.com](mailto:sales@ainfoinc.com)

#### • Phone & Fax

Phone:  
+1-949-639-9688  
+1-949-639-9608

Fax:  
+1-949-639-9670